



UNIVERSITY
OF HULL

Candidate Information



Welcome to the University of Hull

The University of Hull warmly welcomes your application. This candidate pack provides background information regarding the University, the city of Hull and the local area. Information relating to the role and person specification is detailed within the application process for this post which can be found at jobs.hull.ac.uk.



Allam Medical Building

Contents

Message from the Vice-Chancellor

4



About the University of Hull

6



Your life in East Yorkshire

12



Message from the Vice-Chancellor

Here at the University of Hull, we are ambitious about the future: ours, our staff, our students, our alumni and the world around us. Our colleagues, students and partners have developed a renewed, ambitious and distinctive vision - to shape a fairer, brighter, carbon-neutral future for all. That vision gives us a shared sense of purpose and direction, and something we can be all be proud to be a part of.

Right across our University community, our people are doing extraordinary things. They are transforming lives, giving others a voice and tackling some of society's most urgent challenges. We look at things in a different light, working together to find new ways of seeing and understanding to make a real difference - not just for our region, but for the world beyond our shores.

Our values - inclusive, empowering and progressive - mean it is not just what we do, but how we do it that makes a difference. They reflect who we are and how we work to create a culture for success, as we continue to evolve to ensure that we adapt at pace to meet the needs of our students, collaborators and partners, regionally, nationally and globally, both now and in the future.

With a keen focus on performance and pursuing excellence in all that we do, we are looking for strong leaders with a passion for making a difference to continue to drive forward with our ambitions, working together with colleagues, students and partners to achieve Hull's bold ambitions.

This is a time of great opportunity for Hull. We very much look forward to receiving your application for what will be a stimulating, challenging and professionally fulfilling role. Please do not hesitate to let us know if you require more information.

Yours sincerely

Professor Susan Lea,
Vice-Chancellor



The Vice-Chancellor, Professor Susan Lea

Professor Susan Lea is passionate about the role of universities in transforming lives and positively impacting society. She has a track record of leading successful, inclusive organisational change with a consequent raising of performance.

Professor Lea brings extensive leadership experience, from a broad range of universities. Her career spans research and teaching intensive universities, as well as those that play a key role in their region, with senior positions at the University of Greenwich, King's College London and, earlier, the University of Plymouth.

Professor Lea began her career as a lecturer in psychology at the University of Cape Town. She moved to the University of Plymouth in 1994 where she held a number of senior positions, at both faculty and university level, whilst maintaining her commitment to her research into domestic and sexual violence. She moved to King's College London in 2010 where she simultaneously held a number of senior management roles, including Dean of Education and Professor within the Institute of Psychiatry, Psychology and Neuroscience. She was King's Interim Vice-Principal (Education) from November 2012 to March 2013, and went on to hold a number of senior, cross-institutional roles.

Professor Lea was appointed Deputy Vice-Chancellor (Academic) at the University of Greenwich in April 2015, where her responsibilities included playing a key role in developing the strategic vision for the University, driving and managing change in order to improve the quality and scope of staff engagement, improving academic outcomes and leading, with the DVC (Research), the integration of teaching and learning into the University's research strategy.

She now brings that vision and experience to Hull, with a commitment to realise the full potential of the University and contribute significantly to the city and region.



Nidd Building

The University of Hull – A Place To Shine

We are ambitious about the future: ours, our staff, our students, our alumni and the world around us. Our research and teaching are designed to inspire thinking and expand horizons. As one of England's oldest universities, our motto *Lampada Ferens* – carrying the light of learning – remains as relevant as ever as we continue to empower people to shape the future.



“

Whether it's about seizing new opportunities, broadening your horizons or simply doing what you love, if you have the energy and drive to succeed you will go far at the University of Hull.”

Mark Lorch,
Associate Dean (International)
and Professor in Science
Communication and Public
Engagement

Join a university where everyone matters, everyone can grow, and everyone can make a difference. This is a place to shine.

We believe in our students

We believe in our students, unlocking their potential to shape their future. That's why we invest in our students and take the time to get to know them, equipping them with the skills, knowledge, experience and confidence to help them push beyond where they thought they could go, in whatever career they choose.

In 2018, we were awarded Silver in the Teaching Excellence Framework, which recognises and rewards excellence in learning and teaching in higher education institutions. In particular, we were praised for excellent student outcomes.

With over 15,000 students from more than 100 countries, they leave with the skills, values and creative potential that will drive their future careers and enable them to contribute to the world as rounded and responsible citizens.

It is testament to the hard work and dedication of our students, and the University staff who teach and support them, that 95.9% of our graduates go on to find employment or further study within six months of graduating (Destination of Leavers from Higher Education for the academic year 2016/17, published by HESA June 2018).

“

When I chose Hull University, I chose it completely based on the course. It was just the best by miles. And what Hull University can give you is the widest option of possibilities that you didn't expect you were going to try.

Once you've got those skills you use them, you apply them all the time and you're constantly supported by them and given guidance, but at the end of the day you are doing your own projects and that is great, gives you that feeling of independence.”

Carys Taverner
Student





“

We are combining the brightest minds with the finest R&D facilities to advance the treatment of wounds.”

Stewart McKinlay,
Vice President of Research & Innovation at Smith & Nephew

Life-changing research

We look at things in a different light, working together to find new ways of seeing and understanding.

From slavery and emancipation to health and medicine, logistics and supply chain, and energy and environment; our research is making a real difference by addressing global challenges.

The University ranked in the top 50 UK institutions based on research power in the 2014 Research Excellence Framework, with 62% of the submitted research classified as internationally excellent or world-leading, and areas such as Geography and Computer Science achieving a top five ranking, based on research impact.

We're building on our strengths, creating a thriving and inspiring, 'research rich' environment, working towards achieving a top 50 research profile in the 2021 REF.

Confidence in our research capability has never been stronger. In response to the changing and increasingly competitive environment in which we operate, our focus over the last year has been on using our expertise to develop mutually beneficial, long-term collaborative relationships with external partners.

Our journey continues

We are extremely proud of the positive impacts we make on the lives of people and societies through our education and research.

A £300-million investment programme in high-quality teaching and learning facilities, IT infrastructure, research laboratories, social spaces and sporting facilities has seen our campus transformed; a transformation that is already offering significant benefits to students, staff and the wider community. We have also worked with the University Partnership Programme Limited, a leading provider of on-campus student accommodation, to deliver additional, excellent accommodation options for our students, which was completed in 2019.

The University's evolution extends well beyond physical change. Our focus on improving the way that we operate and work with others has helped us to form valuable partnerships and is creating new opportunities for our students, the businesses and other organisations we work with and our research partners. One of the highlights is our significant contribution, as a Principal Partner, to Hull's success during its reign as the UK City of Culture 2017. Building on this success, we brought the best of British science to Hull and the Humber, when we hosted the British Science Festival in September 2018. This gave us the opportunity to showcase our significant contribution to this field - focusing on three key areas - energy and the environment; health and the medical sciences; and exploration, movement and discovery.

With a keen focus on performance and pursuing excellence in all that we do, the University of Hull continues its journey, one that is led by our commitment to delivering excellent research and a fantastic student experience.

Here's a flavour of our thought-provoking, game-changing research



Yorkshire Cancer Research is investing over £5-million into research programmes to tackle cancer inequalities in Hull.



The University's Wilberforce Institute's life changing slavery research received national recognition when it was awarded the prestigious Queen's Anniversary Prize in 2016.



Researchers at the University now have direct access to one of the most powerful computers in the country, following a £2.1 million investment. Called Viper, it is the fastest machine of any northern university and the seventh fastest of any university in the country.

“

This means our research can go from something you would never dream of doing to something you can do in a month. In terms of being competitive on a world stage, this is absolutely crucial.”

Dr David Benoit,
Senior Lecturer in Physical Chemistry

Culture at Hull

Visitors admiring the National Portrait Gallery: Paul Smith to JK Rowling exhibition



World-class events, unforgettable experiences

Our commitment to creativity has been demonstrated through our Principal Partnership with Hull UK City of Culture 2017.

As a producer and supporter of creativity, arts and culture, we seized the opportunity to bring a world-class programme of events to the University and have created unforgettable experiences for our students, staff and the wider community.

Record visitor numbers on campus

In 2017, the University welcomed record visitor numbers and here on campus. Over 60,000 people, including many first-time visitors, enjoyed the impressive range of world-class exhibitions, installations, debates, music and drama, held as part of our cultural programme.

Hosted some of the world's greatest artists

Redeveloped to national standard as part of a £28-million investment in our Brynmor Jones Library, our art gallery hosted some of the world's greatest artists as part of exhibitions with partners such as the British Museum and National Portrait Gallery. 'Lines of Thought - Drawing from Michelangelo to Now', showcased works from prominent masters including Monet, Picasso, Rembrandt and Riley, and the National Portrait Gallery loan exhibition displayed images of stars from JK Rowling to Sir Ian McKellen.

Putting our graduates back in the spotlight

We have also put some of Hull's most famous cultural experts back in the spotlight including graduate and former lecturer Anthony Minghella, the Oscar-winning, Hollywood film director, through a popular retrospective. In addition, a headline-grabbing exhibition on the life and work of former University Librarian Philip Larkin offered a new perspective on the man described as 'Britain's Favourite Poet' with previously unseen personal artefacts.

Giving our students a chance to shine

Our campus was at the heart of the action - and so were our students. Thanks to outstanding facilities and partnerships leveraged by staff across the University, our students experienced once in a lifetime opportunities to broaden their horizons and gain unrivalled experience as part of the UK City of Culture 2017 programme.

Katrina Rae, Drama and Music student

Thanks to cultivating relationships with the likes of the BBC, the University of Hull is offering students the chance to seize some amazing creative opportunities.

Katrina Rae, a Drama and Music student, was selected to perform recently on BBC Introducing, a showcase for new music and a hotbed for young talent. Gathering together talented students like Katrina, as well as inspirational music staff, the show was broadcast live from Middleton Hall's top-class music studios.

As part of a live broadcast, Katrina played a set of her own material from Middleton Hall, but whilst usually she would perform solo with just her guitar, this occasion gave her the opportunity to collaborate with classical music students, giving her songs a completely different sound.

On the back of her performance, she secured a gig as part of BBC Radio 1's Academy, which is designed to provide a week of inspiring events aimed at helping young people kick-start their careers in the creative industries.

"Being able to work with students who perform different styles of music - like collaborating with the classical music students for BBC Introducing - has really broadened my horizons when it

comes to my own material. If I wasn't here, I would never have thought of having strings on my songs but it really worked."

"I've always wanted to be a musician, however I do think that being able to perform at such awesome events has given me a lot more confidence and drive. I guess it's shown me that I've got as much chance as anyone else if I really want it enough. When I entered the competition for BBC Introducing I never, in a million years, thought I'd win."



“

I came to an open day at Hull and immediately wanted to come here. The staff, the facilities, everything was amazing..”

“I'm really inspired by the lecturers here. Not only are they really supportive of you as an individual, many are also performers - they know what it's like to write and play your own material because they do it themselves.”

Katrina Rae, Drama and Music student

Case Study

Professor Jane Thomas, English and Creative Writing

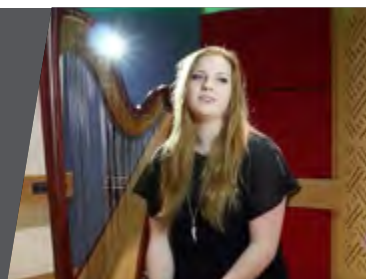
[View Video >](#)



Case Study

Pippa Brazier, music student

[View Video >](#)



Your life in East Yorkshire

East Yorkshire and Northern Lincolnshire has something to offer everyone – a place where your family can go walking in the Wolds one weekend and be on the beach the next. A place that was UK City of Culture 2017 and where you can afford to choose between a beamed cottage in a picturesque village or a large family home overlooking the Humber Estuary.

Deciding to relocate is a big decision for all the family and you need information on everything, from homes and businesses to sports and events.

As a region, the area is progressive, seeing billions of pounds worth of private sector investment across multiple thriving industries – leading to a diverse array of opportunities, which also include public sector improvements: such as the development of multi-million pound leisure and cultural facilities. Investment in retail and historical realm works are also being made across all four local authorities – enhancing the area's vibrancy and solidifying its legacy for future generations to come.

The region offers low commute to work times allowing that sought-after work-life balance, lower than average house prices, a fantastic choice of schools and areas of unrivalled natural beauty.

This remarkable region has so much to offer in terms of landscape and heritage, and something for all the family when it comes to shopping, dining and days out. And, with the beautiful countryside of the Lincolnshire and Yorkshire Wolds making up a huge proportion of the area, outdoor lovers will have a wealth of different areas for walking, riding, cycling and running.

When it comes to dining out, the Humber boasts an eclectic array of award-winning restaurants, gastro pubs and

independent coffee shops with delicious, fresh and locally-sourced produce. From a fantastic selection of shops, with everything from designer boutiques, high street shopping and independent retailers; you'll be spoilt for choice if you're after some retail therapy.

There has never been a better time to make Hull your home, as the cost of living remains among the lowest in the UK and following its incredible transformation – this is only the beginning.

The £80m redevelopment project of Hull's Fruit Market is due to be complete by the end of this year and will include 109 new homes that will sit alongside a hub of independent shops, boutiques and the beautiful Marina. The development will become Hull's 'urban village': a unique and vibrant cultural quarter that seeks to marry Hull's incredible history with its ever-growing cosmopolitan culture.


Beverley is one of the largest market towns where life is thriving with an eclectic combination of designer boutiques, award-winning restaurants and independent cafés. Architecturally, it's a unique and beautiful place; cobbled streets lined with Georgian houses surround the town centre with its striking Minster poised above the skyline.

Find out more about the region at:



University of Hull,
Cottingham Road,
Hull, HU6 7RX
United Kingdom

hull.ac.uk
+44 (0)1482 346311
enquiries@hull.ac.uk

 [uniofhull](#)

 [uniofhull](#)

 [universityofhull](#)

 [universityofhull](#)



UNIVERSITY
OF HULL